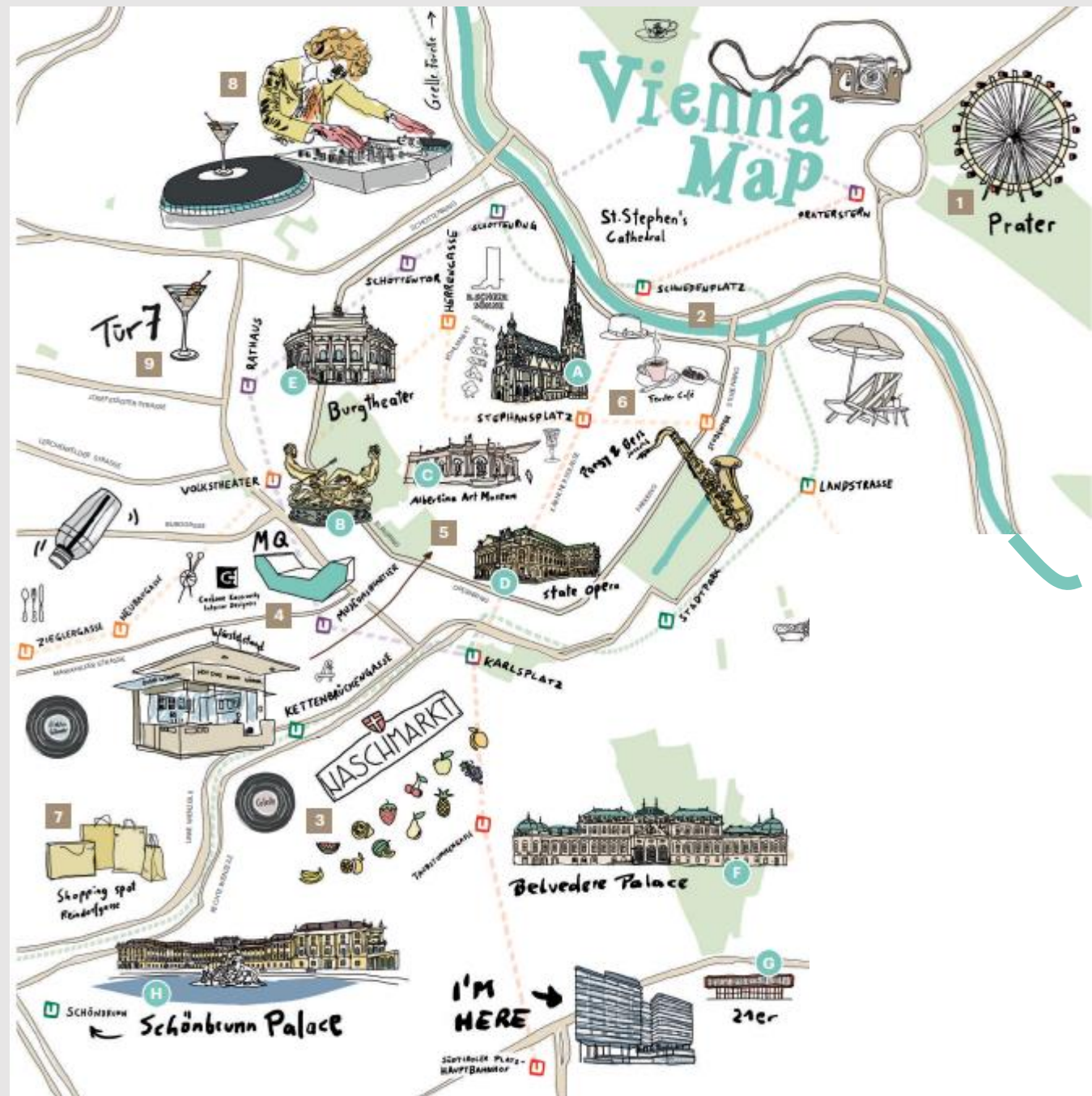


A



# Vienna & Neighborhood







# Vienna & Neighborhood

## Prime Location:

- Central and prestigious setting in the Belvedere district
- Easy access to main attractions and city center
- Close to Belvedere Palace and Museum for events & cultural experiences

## Green Spaces:

- The Schweizer Garden is located in front of the hotel.

## Excellent Transport Links:

- Well-connected by public transportation
- Close to main train station 5min. walk

## Dynamic Atmosphere:

- A blend of sleek, modern architecture and vibrant urban life
- Trendy dining options and entertainment venues



## Concert Venues

Wiener Stadthalle: 7 km – 20 minutes car ride

Ernst Happe Stadion: 6 km – 14 minute car ride

Gasometer of Vienna: 2 km – 7 minutes car ride

## Security Services

Private entrance from garage to guestroom floors

Floors are only accessible with keycard for the respective rooms

24 hour security team in house

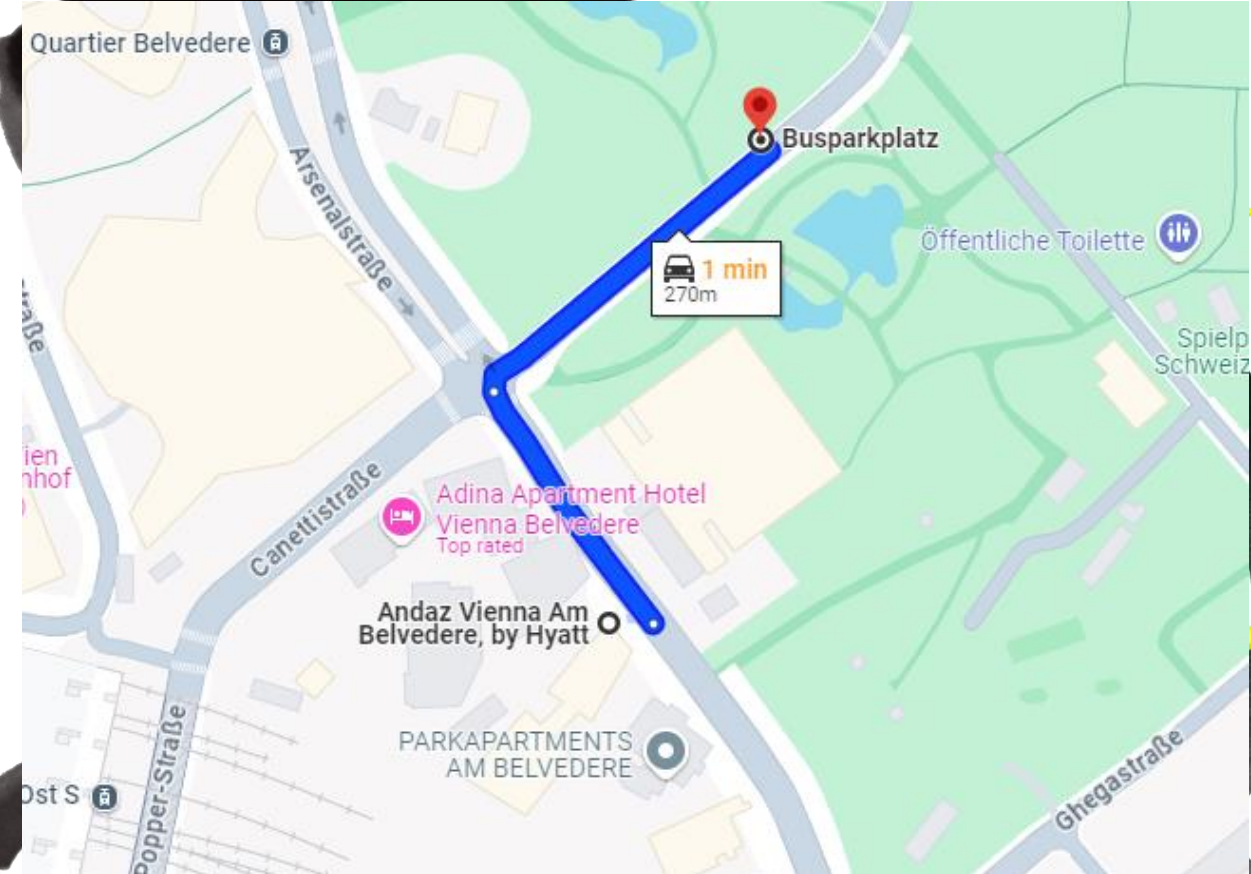


# Bus Parking

---

Drop Off possibility in front of the main entrance

Bus Parking in walking distance



ANdAZ Vienna Am Belvedere

# GUEST ROOMS & SUITES

In close proximity to Belvedere Palace, Andaz Vienna Am Belvedere showcases contemporary local art and design that immerse you in the history of Prince Eugene, as well as the city of Vienna.



303

Rooms & Suites

30 – 33 sq m

Rooms

10

Rooms & Suites  
Types

41 – 190 sq m

Suites

44

Suites







# 251x King & Twin Rooms





# 8x Deluxe Rooms



# 21x Andaz Suites





# 12x Andaz Deluxe Suites





# 8x Belvedere Park View Suites





## 2x Executive Suites





# Penthouse Suite







# AURORA ROOFTOP BAR

80  
Outdoor

100  
Indoor

120  
Total Capacity

The perfect setting for every occasion: The Aurora Rooftop Bar invites you to after show parties, exclusive meetings & private celebrations. Immerse yourself in a world of elegance and sophisticated hospitality high above the city skyline.

# EUGEN21

40

Outdoor

120

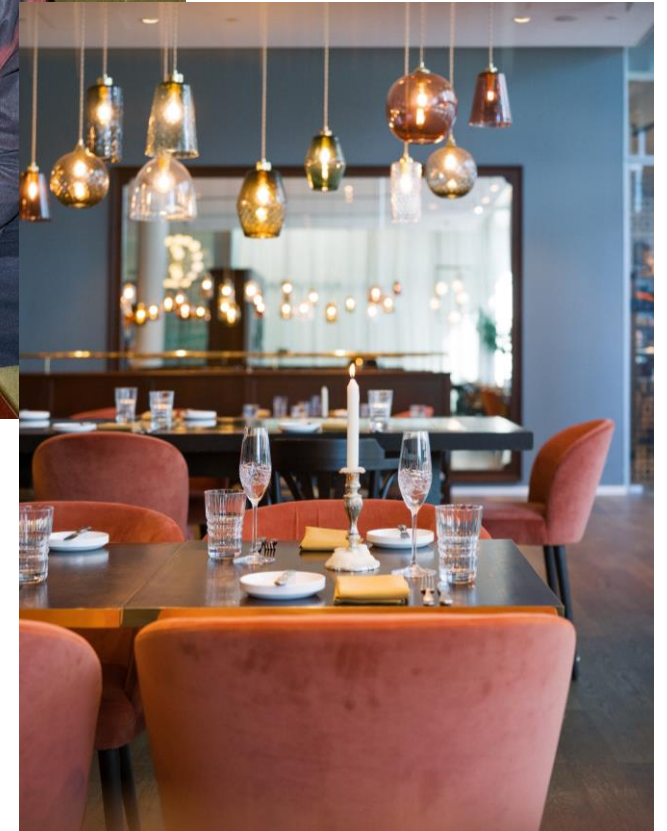
Indoor

170

Total Capacity

The modern Viennese restaurant offers a well-balanced combination of seasonal and traditional dishes and Austrian urban cuisine.

Here, you can delight in a modern take on Austrian cuisine: while the ANdAZ Schnitzel offers a fresh interpretation of a traditional dish, the Beef Tartare remains steadfastly classic.







# CYLIST CAFÉ & Bistro

With its urban charm, the Cyclist Café & Bistro offers a cozy atmosphere to linger around. Our menu includes sandwiches, salads and sweets, among other options, so that every appetite is satisfied.









# HEALTH & WELLNESS

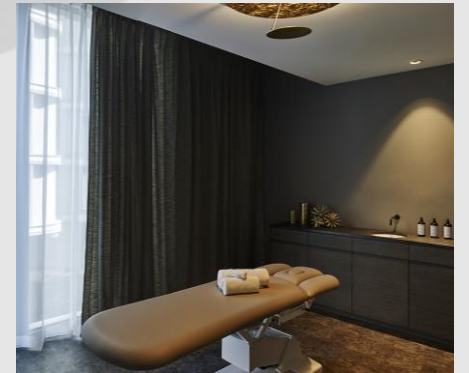
Relax and re-energize in our exclusive Health and Wellness area on the 4th floor.

---

- Enjoy the sauna overlooking the city
- Experience an invigorating steam bath with an ice fountain
- 1 relaxation room
- 2 Treatment Rooms
- Work out any time of day or night in our 24-hour fitness center











THANK YOU!

---

Jelena Cenic

Andaz Am Belvedere Vienna

+43 (1) 205 7744 4406

[jelena.cenic@andaz.com](mailto:jelena.cenic@andaz.com)